



CANADA'S RAILWAYS

Emissions Management Initiatives in the Canadian Rail Sector

Clean Air Hamilton

March 2019

@RailCanada

www.facebook.com/RailCanada

www.linkedin.com/company/railway-association-of-canada

www.railcan.ca



Plan

- Canadian Rail Network
- Canadian GHG Emissions Profile
- Rail Emissions in Canada
- Emissions Management Technologies
- GHG emissions performance in the Windsor-Quebec Corridor
- MOU 2018-2022
- Locomotive Emissions Monitoring Reports

@RailCanada

www.facebook.com/RailCanada

www.linkedin.com/company/railway-association-of-canada

www.railcan.ca



Canadian Rail Network



Source: RAC GIS Database

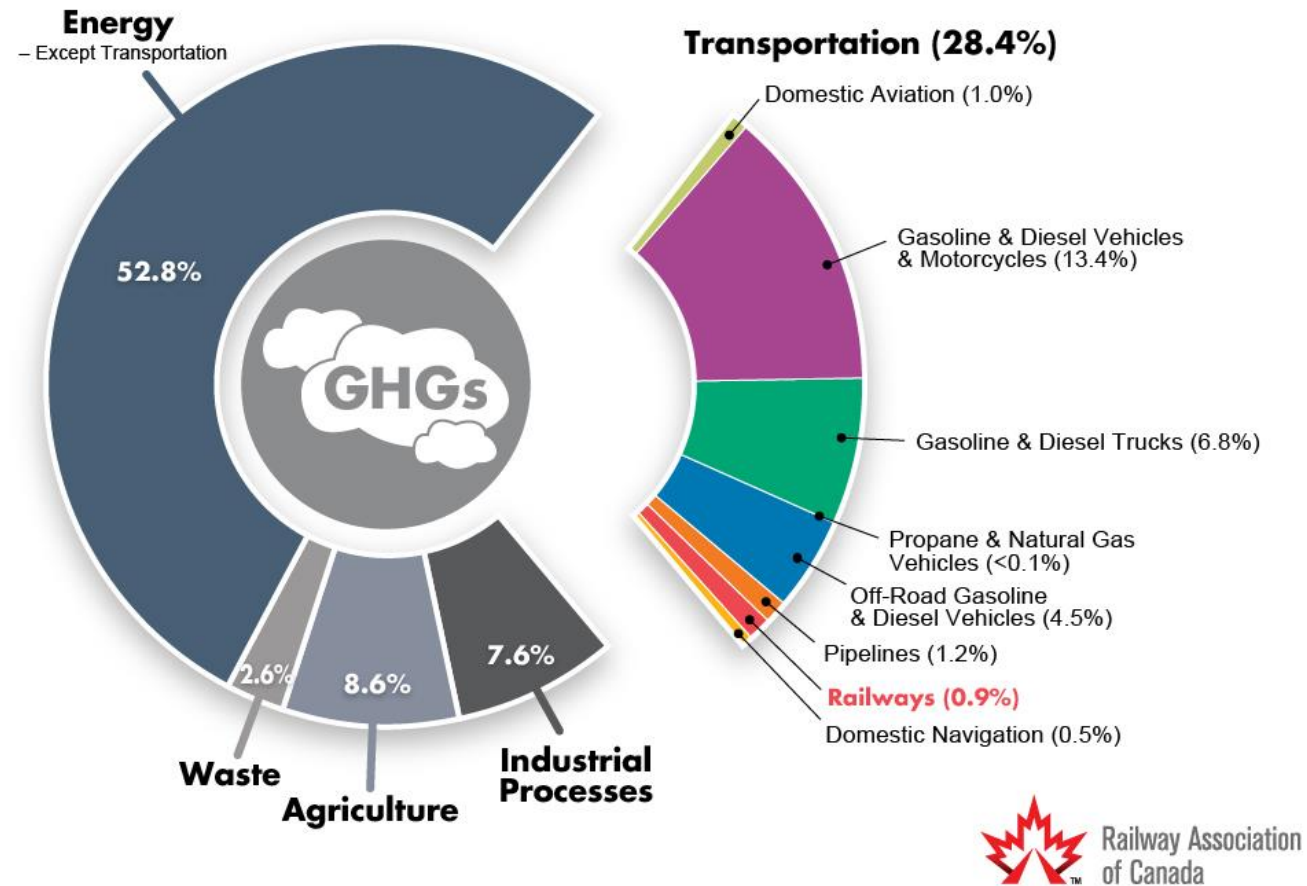
@RailCanada

www.facebook.com/RailCanada

www.linkedin.com/company/railway-association-of-canada

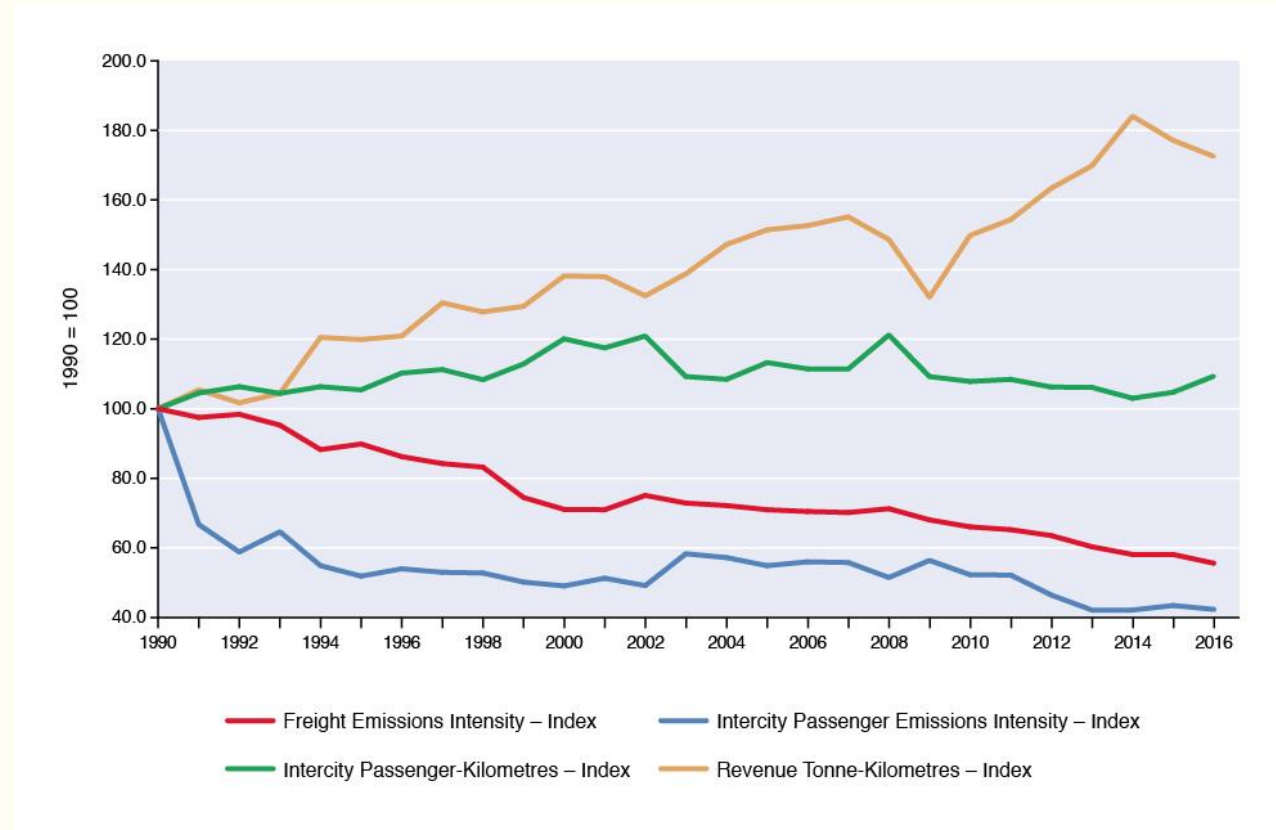
www.railcan.ca

Greenhouse Gas Emissions by IPCC Sector in 2016



Source: Environment and Climate Change Canada, 2018 National Inventory Report, 2018.

Canadian Rail Emissions Performance



Source: LEM Dataset, 2018

@RailCanada

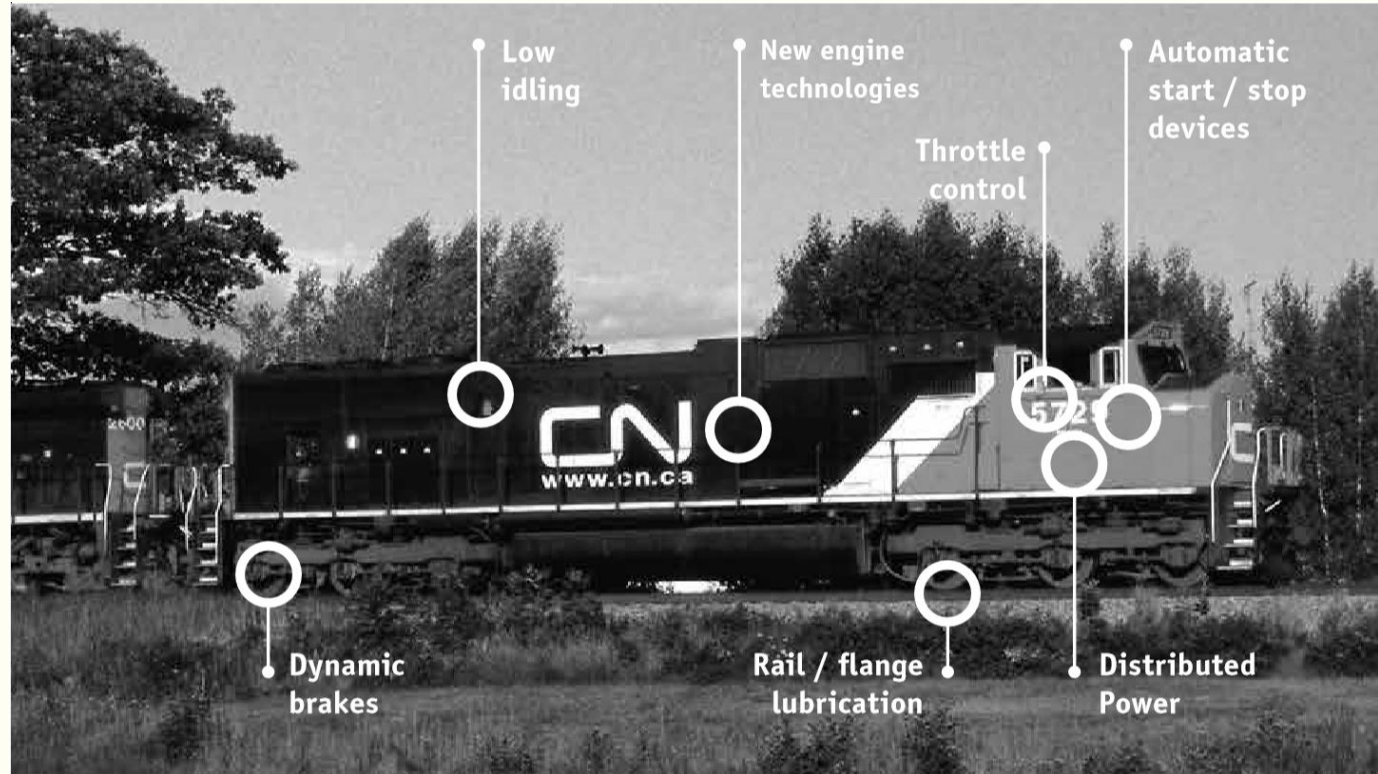
www.facebook.com/RailCanada

www.linkedin.com/company/railway-association-of-canada

www.railcan.ca



Emissions Management Technologies



@RailCanada

www.facebook.com/RailCanada

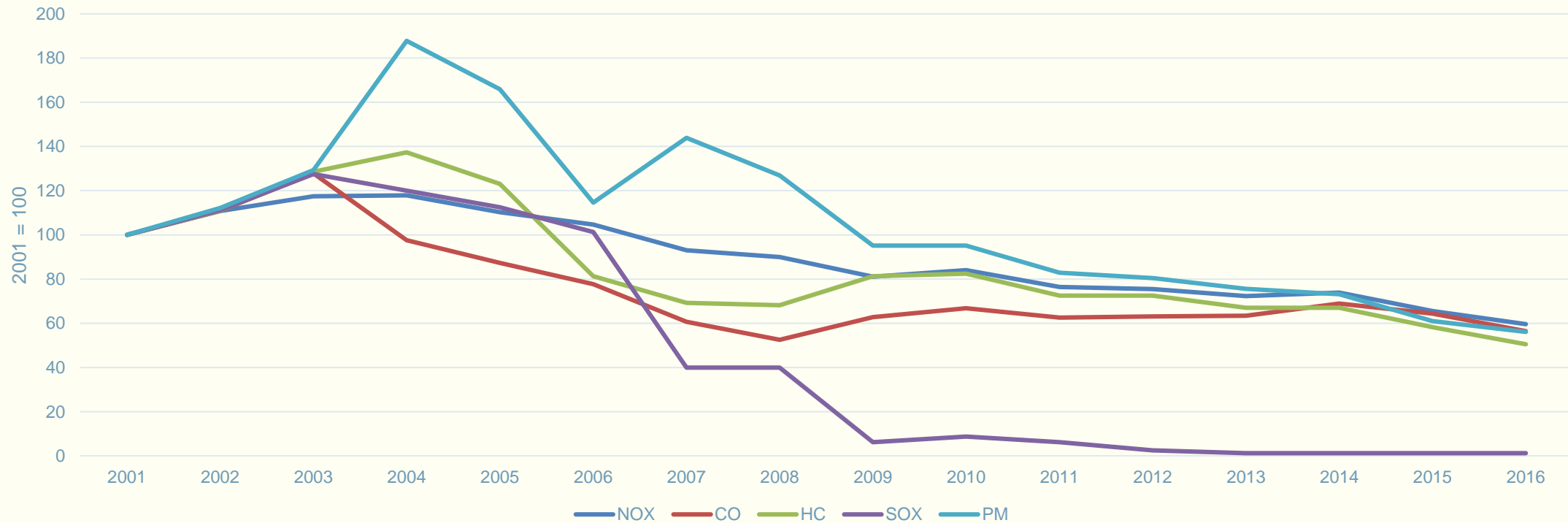
www.linkedin.com/company/railway-association-of-canada

www.railcan.ca



Performance – Windsor-Quebec Corridor

Canadian Railways - CAC Emissions Indices
Windsor-Quebec Tropospheric Ozone Management Area



Source: LEM Dataset

MOU 2018-2022

- Signed in March 2019
- GHG emissions intensity targets
- Areas of collaboration
- Commitment to research and development

2018-2022 MOU – Emissions Intensity Targets			
Carrier Class	Percent Reduction Target (by 2022)	Base year	Productivity Unit
Class I Freight	6% reduction from 2017	2017 reported GHG intensity	CO ₂ eq. per 1,000 revenue tonne kilometres
Intercity Passenger	6% reduction from 2017	2017 reported GHG intensity	CO ₂ eq. per passenger-kilometre
Short Lines	3% reduction from 2017	2017 reported GHG intensity	CO ₂ eq. per 1,000 revenue tonne kilometres

Locomotive Emissions Monitoring Reports

